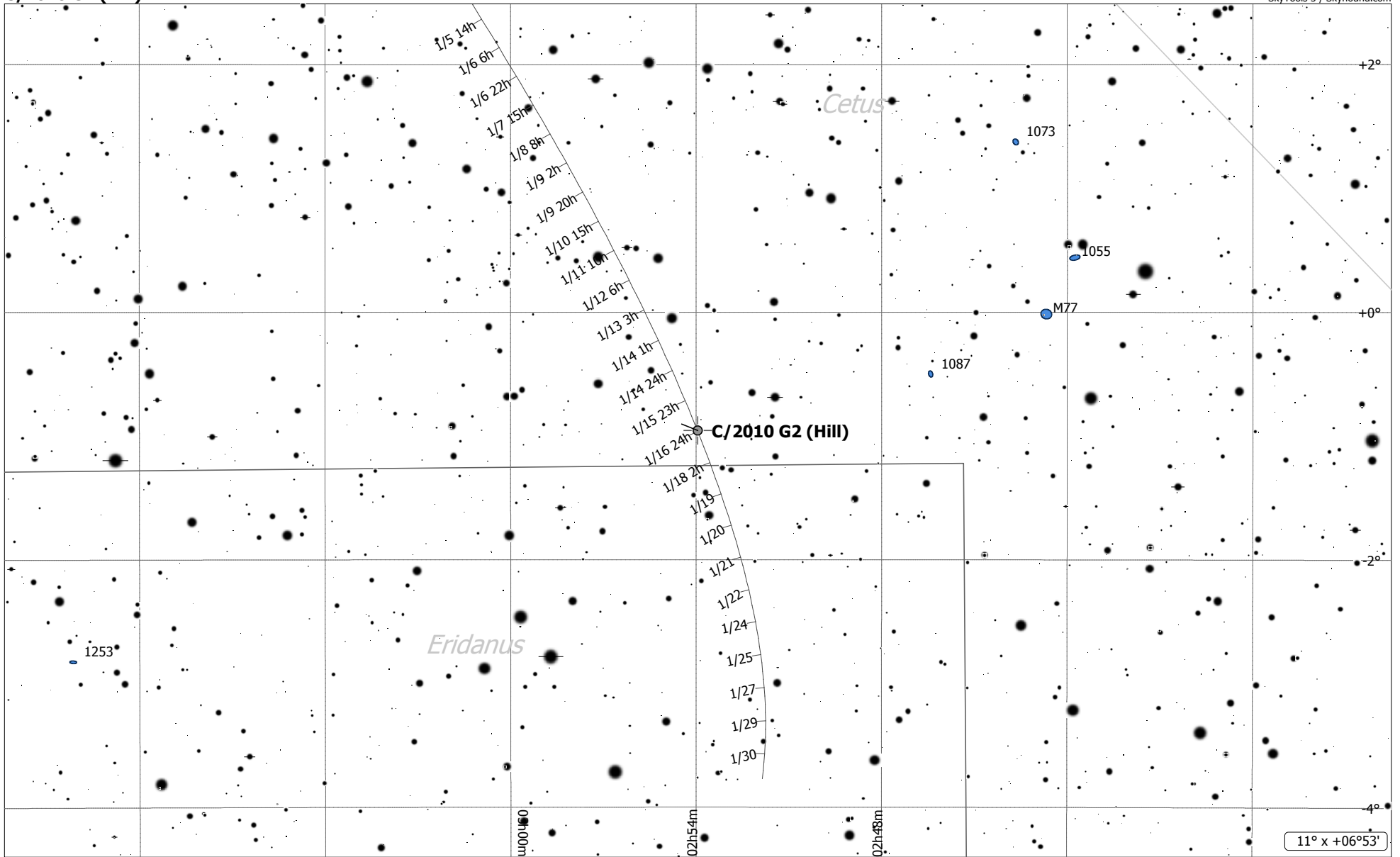


C/2010 G2 (Hill)



11° x +06°53'

C/2010 G2 (Hill) (Comet)
 Magnitude: 10.87 Coma Diameter: 4.4' SBr: 22.7 Mag/arcsec²
 Earth Distance: 2.1 AU

• Mult. Star	• 10 4
☉ Comet	• 11 5
♁ Asteroid	• 6
♃ Galaxy	• 7
	• 8
	• 9